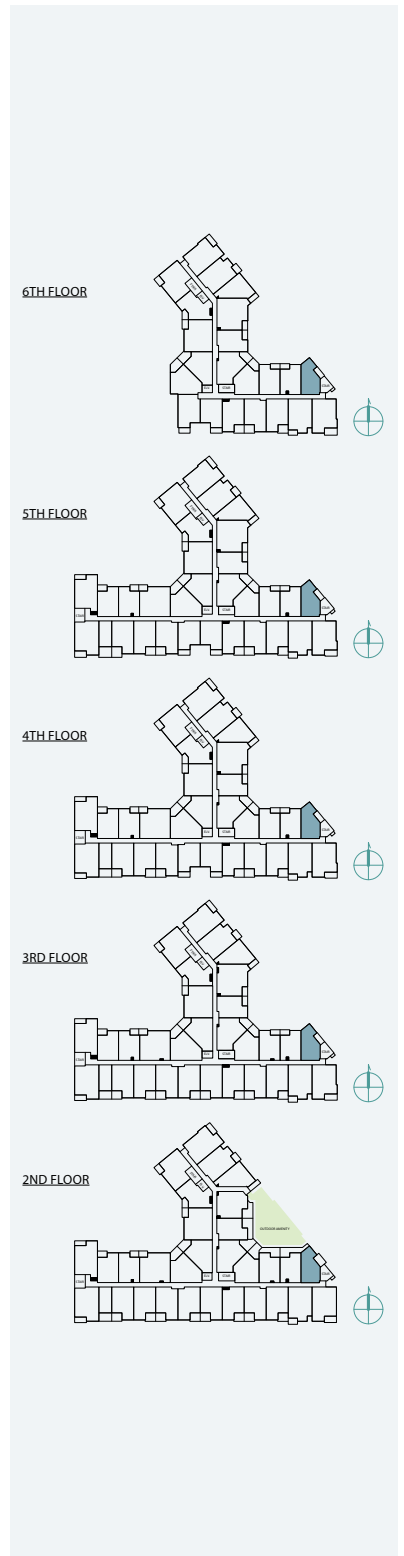


# A1

## 1 BEDROOM | 1 BATH

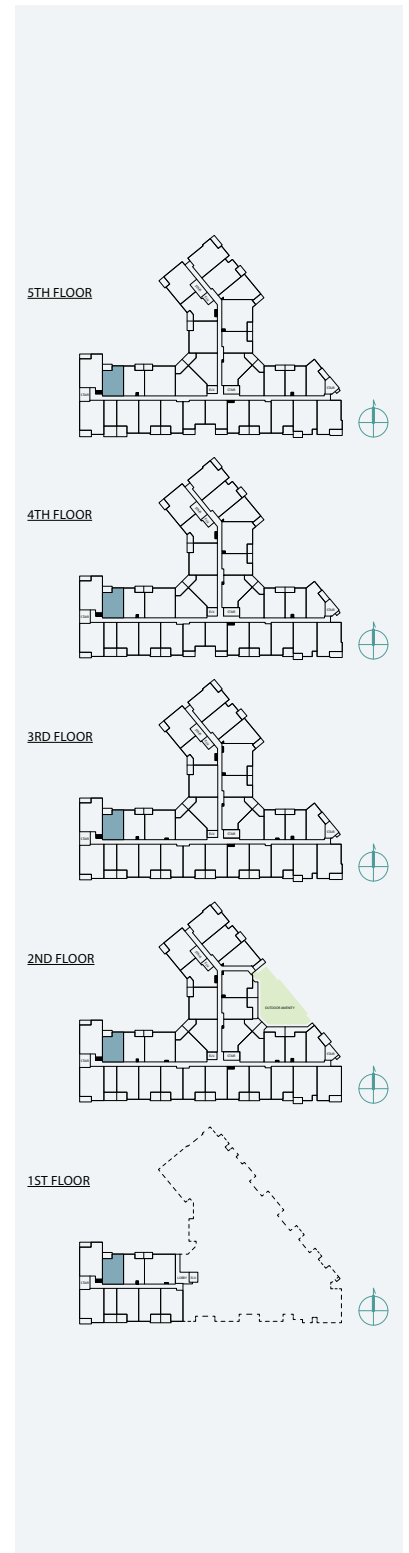
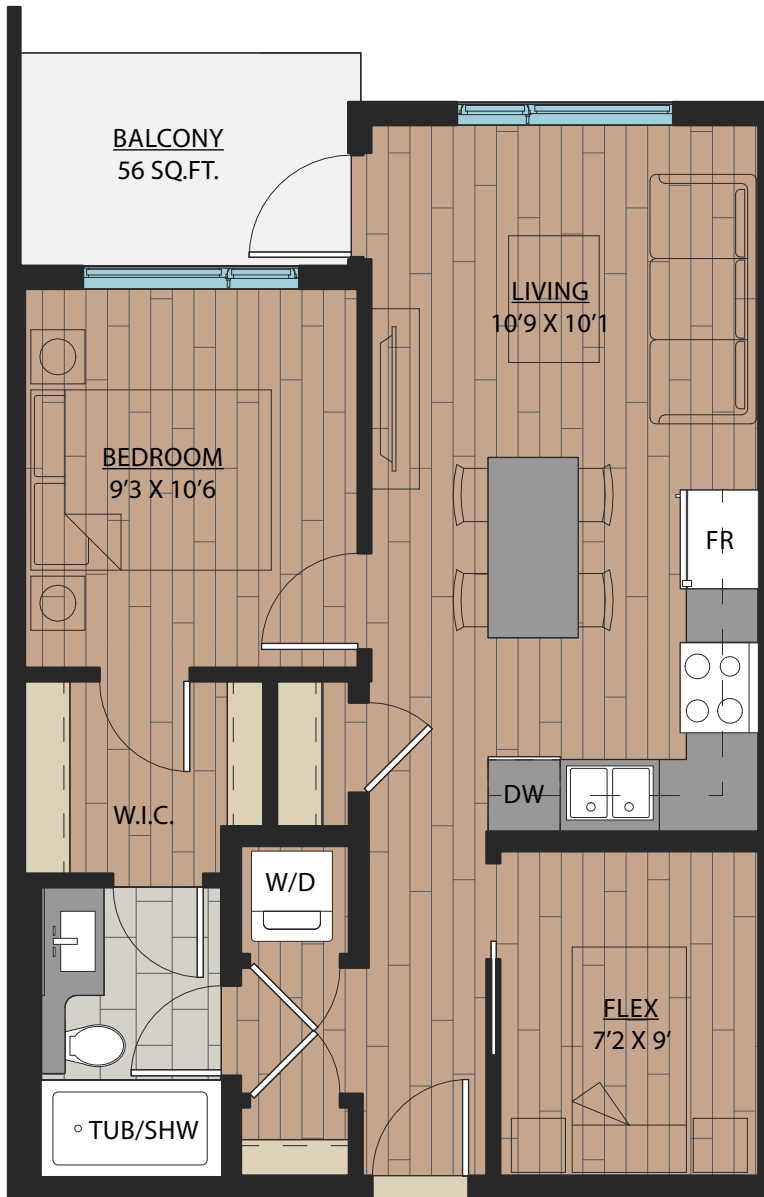
SUITE: 563 SQFT



# B1

# 1 BEDROOM + FLEX | 1 BATH

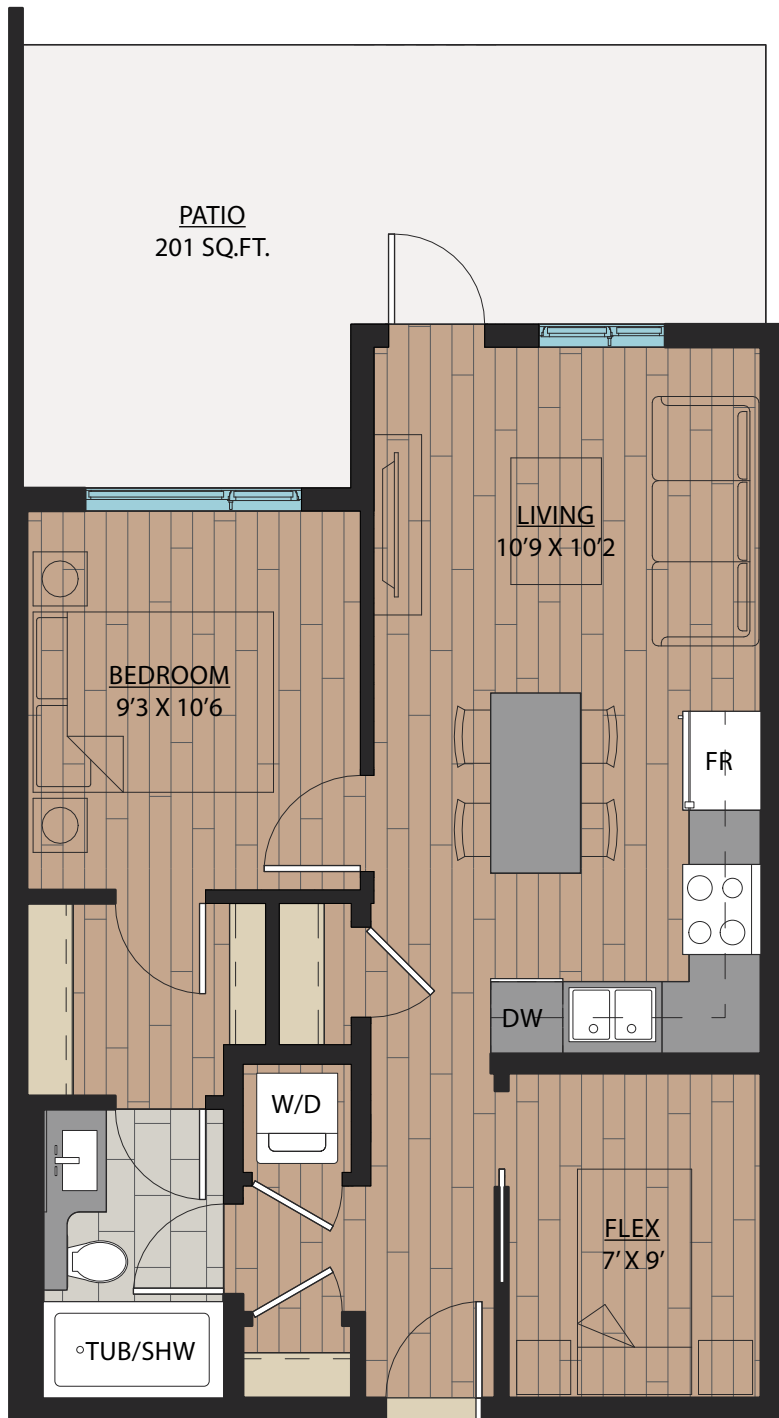
SUITE: 590 SQFT



# B1A

## 1 BEDROOM + FLEX | 1 BATH

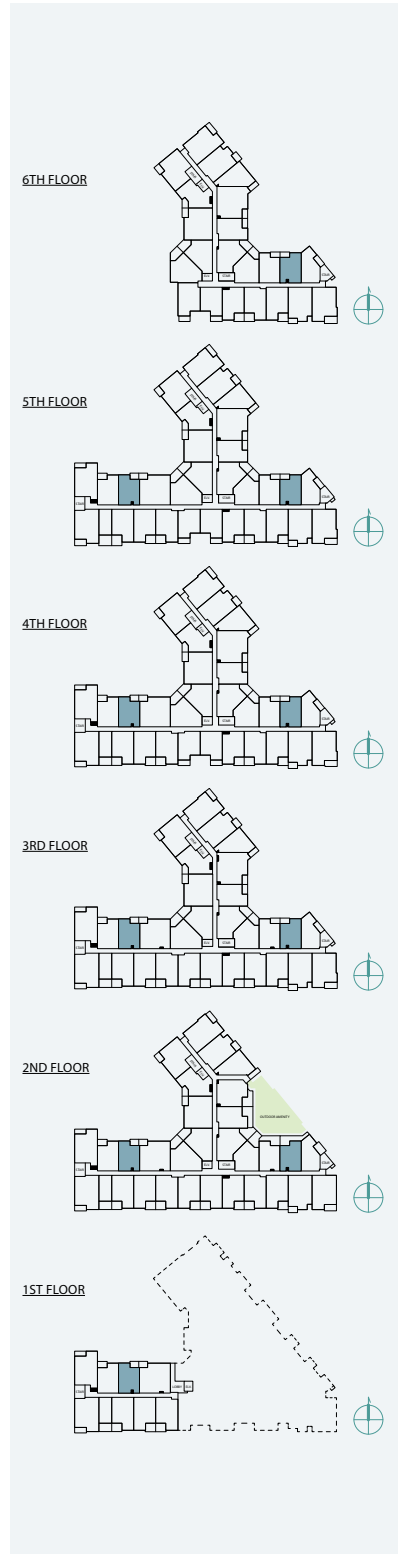
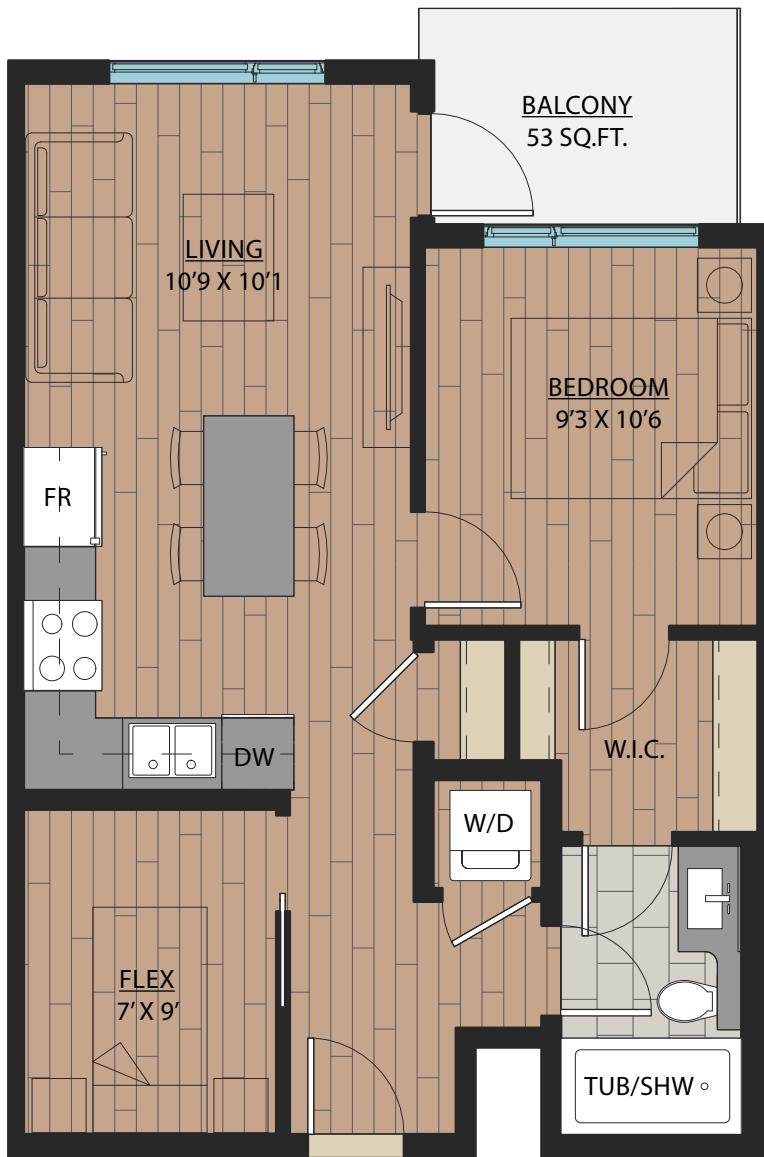
SUITE: 589 SQFT



# B2

# 1 BEDROOM + FLEX | 1 BATH

SUITE: 582~584 SQFT





# B2A

## 1 BEDROOM + FLEX | 1 BATH

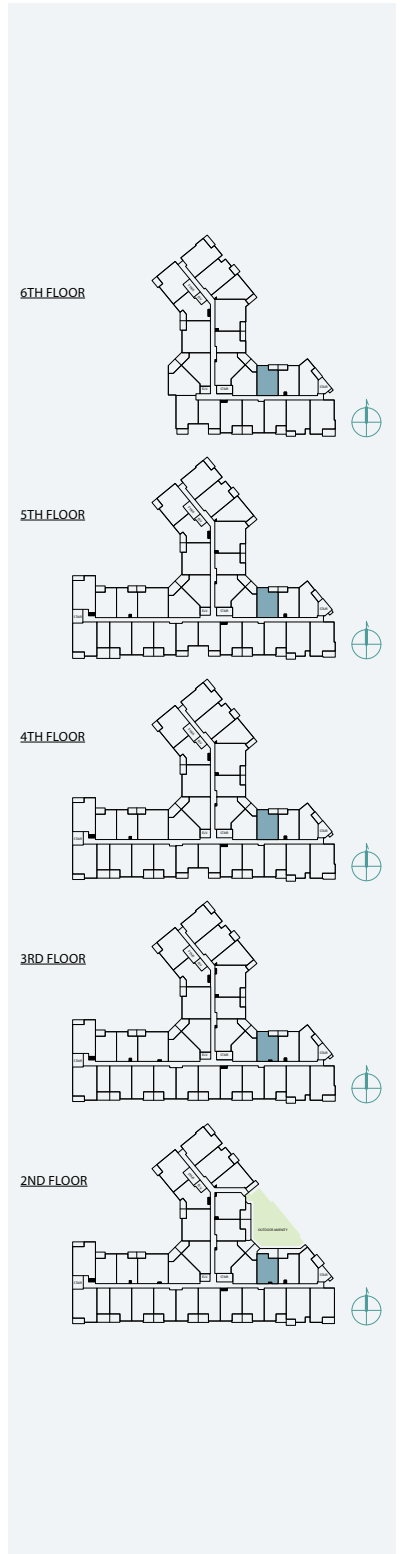
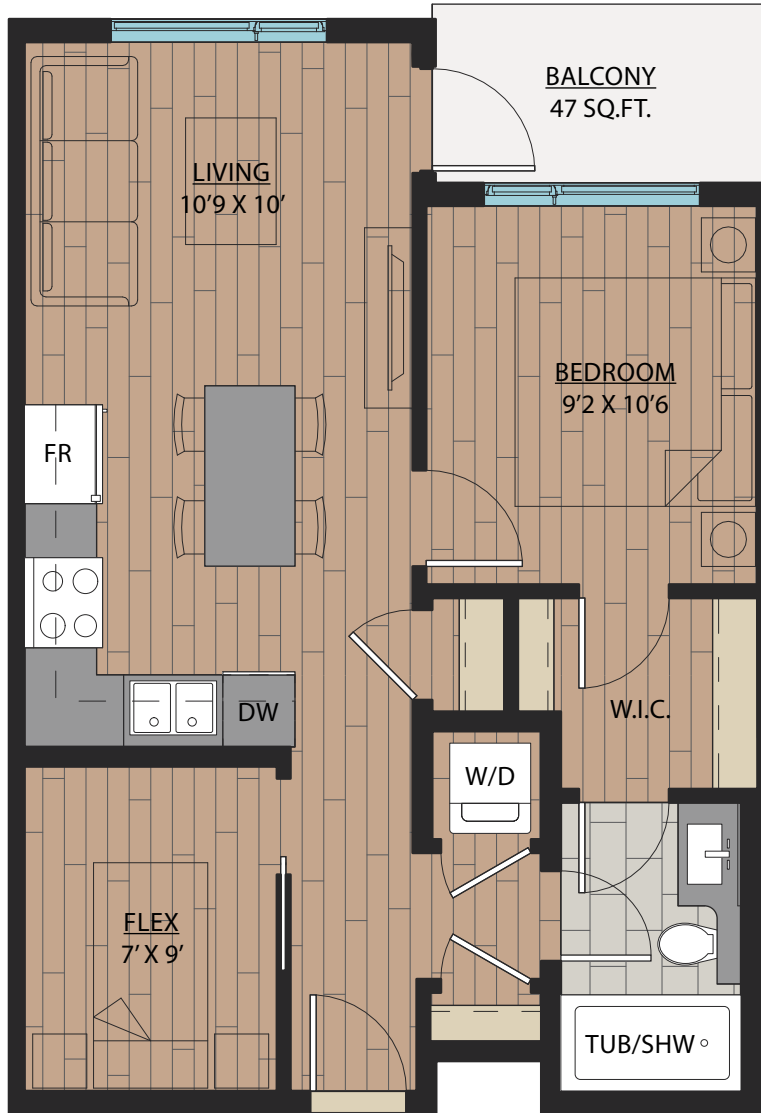
SUITE: 584 SQFT



# B3

# 1 BEDROOM + FLEX | 1 BATH

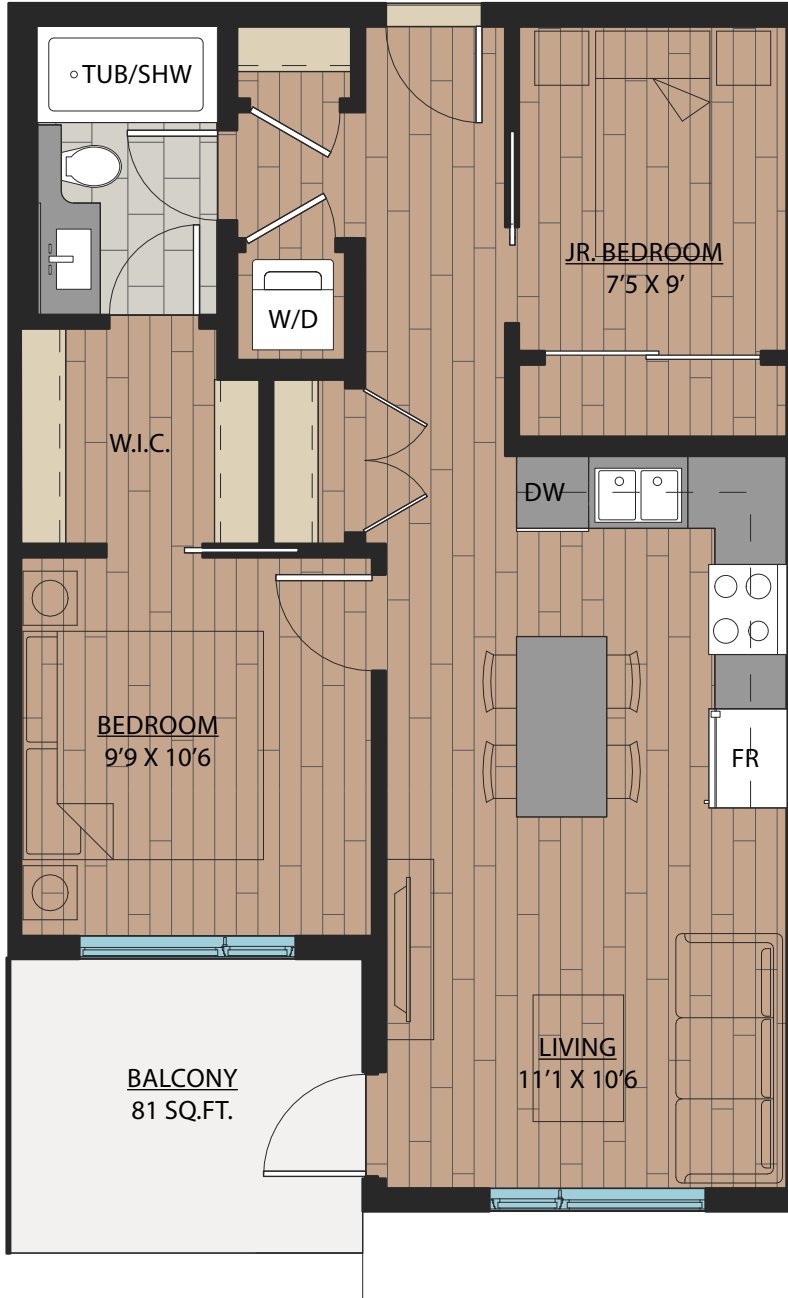
SUITE: 586~590 SQFT



# B5

## JR. 2 BEDROOM | 1 BATH

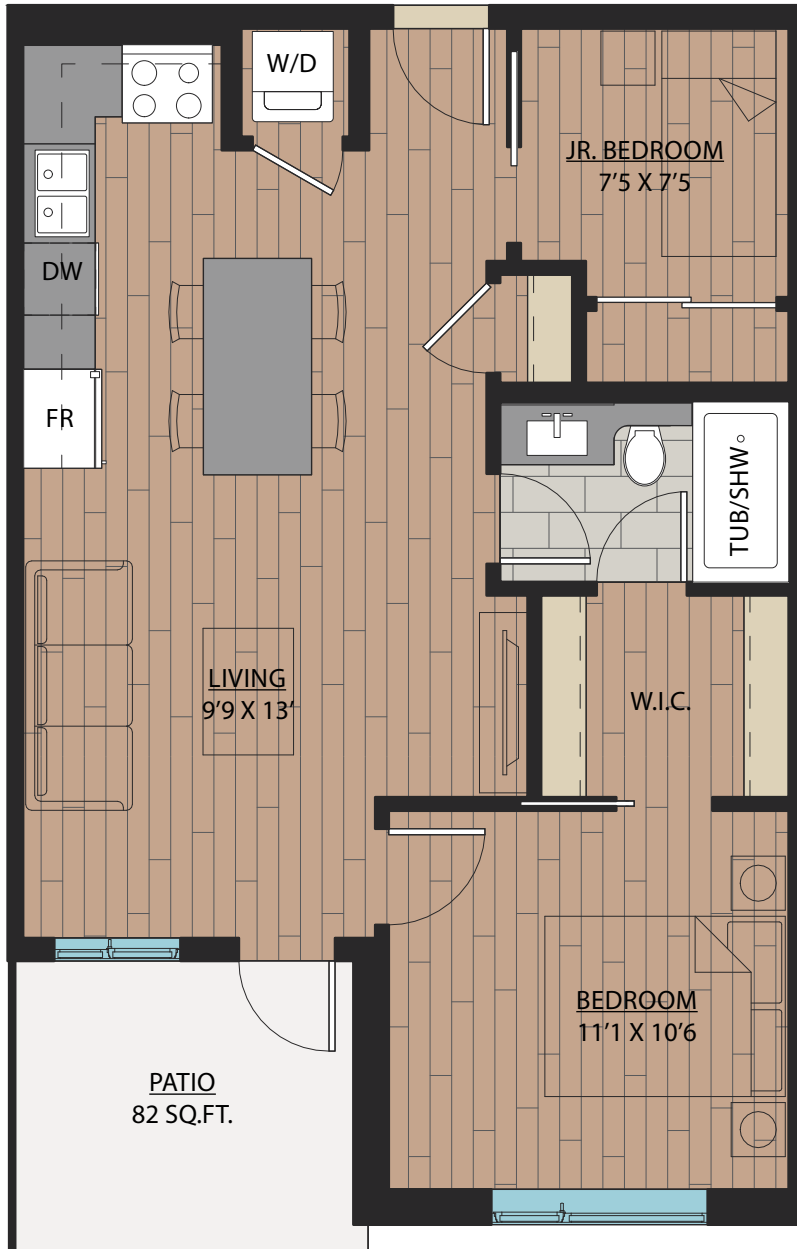
SUITE: 658 SQFT



# B5A

## JR. 2 BEDROOM | 1 BATH

SUITE: 657 SQFT



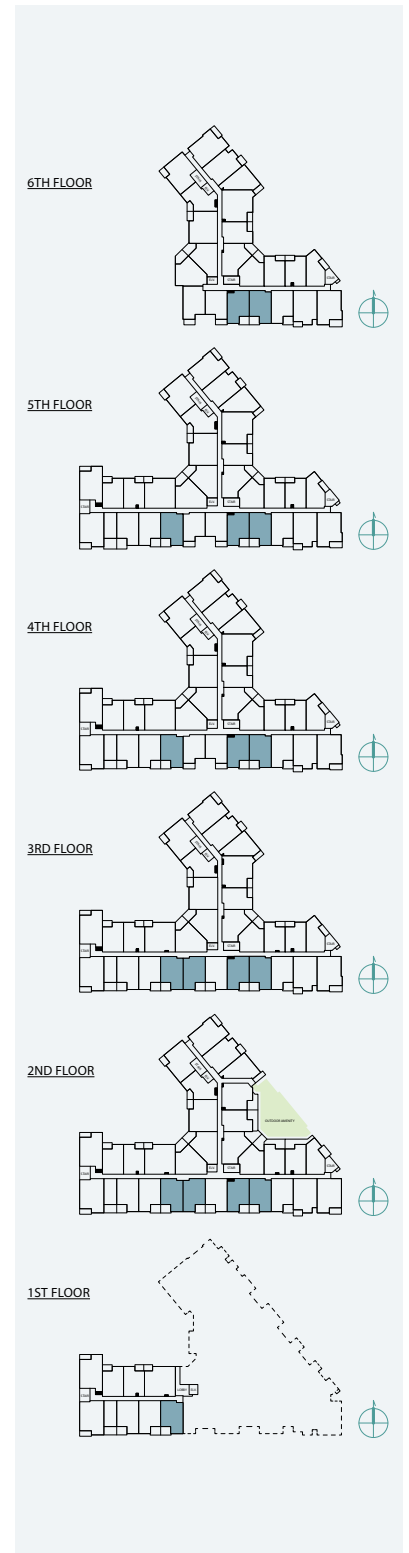
GROUND FLOOR



# B6

## JR. 2 BEDROOM | 1 BATH

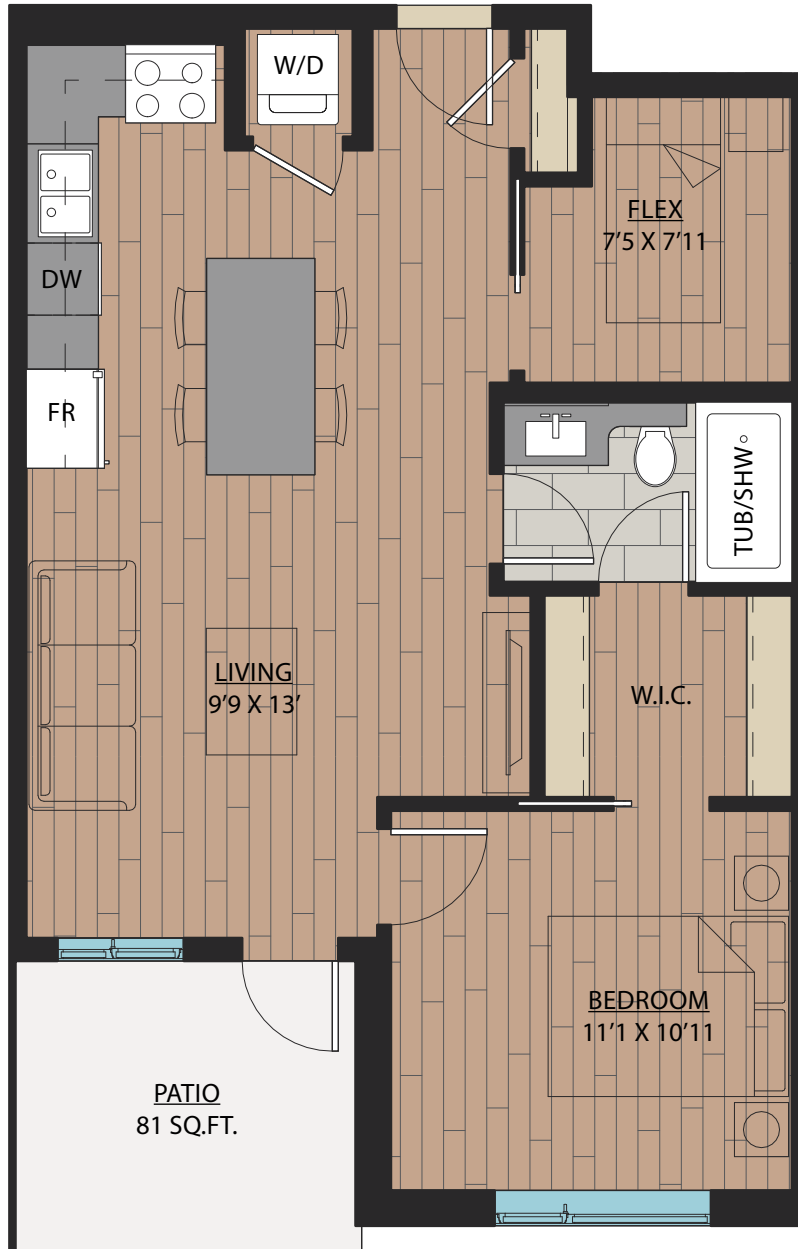
SUITE: 642~659 SQFT



# B6A

## 1 BEDROOM + FLEX | 1 BATH

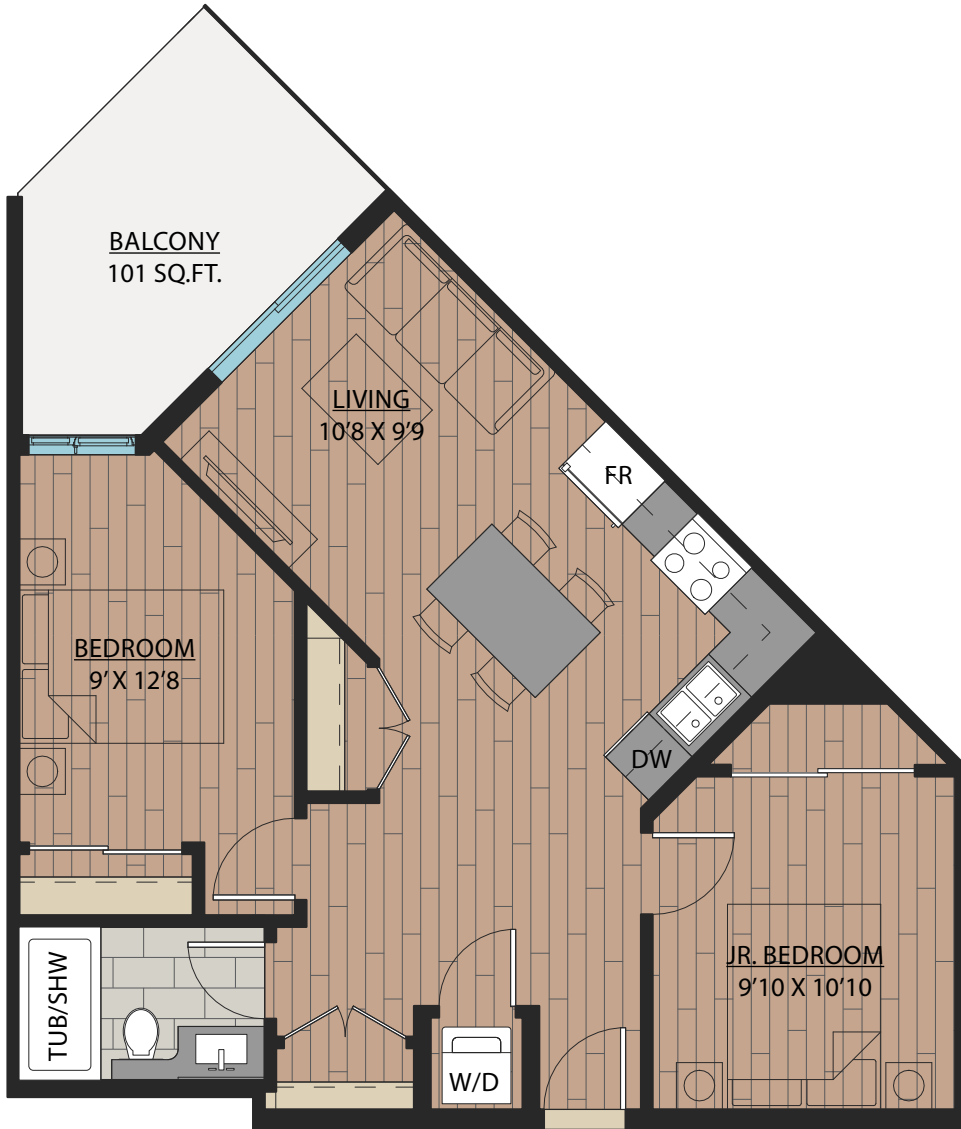
SUITE: 640~668 SQFT



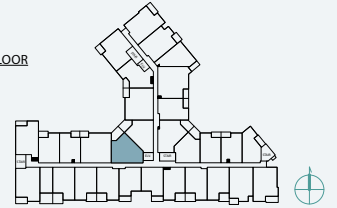
# B7

# JR. 2 BEDROOM | 1 BATH

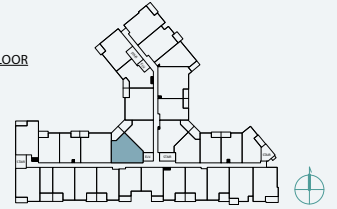
SUITE: 708 SQFT



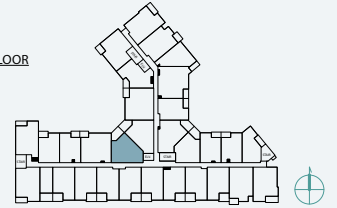
5TH FLOOR



4TH FLOOR



3RD FLOOR



2ND FLOOR



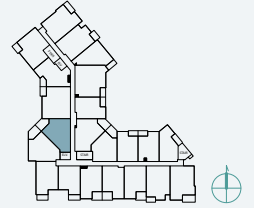
# B8

# JR. 2 BEDROOM | 1 BATH

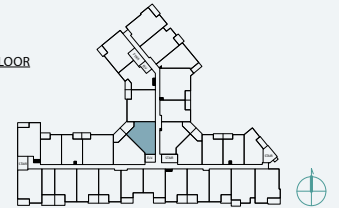
SUITE: 690 SQFT



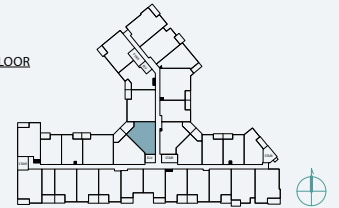
6TH FLOOR



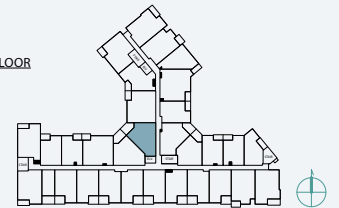
5TH FLOOR



4TH FLOOR



3RD FLOOR



2ND FLOOR

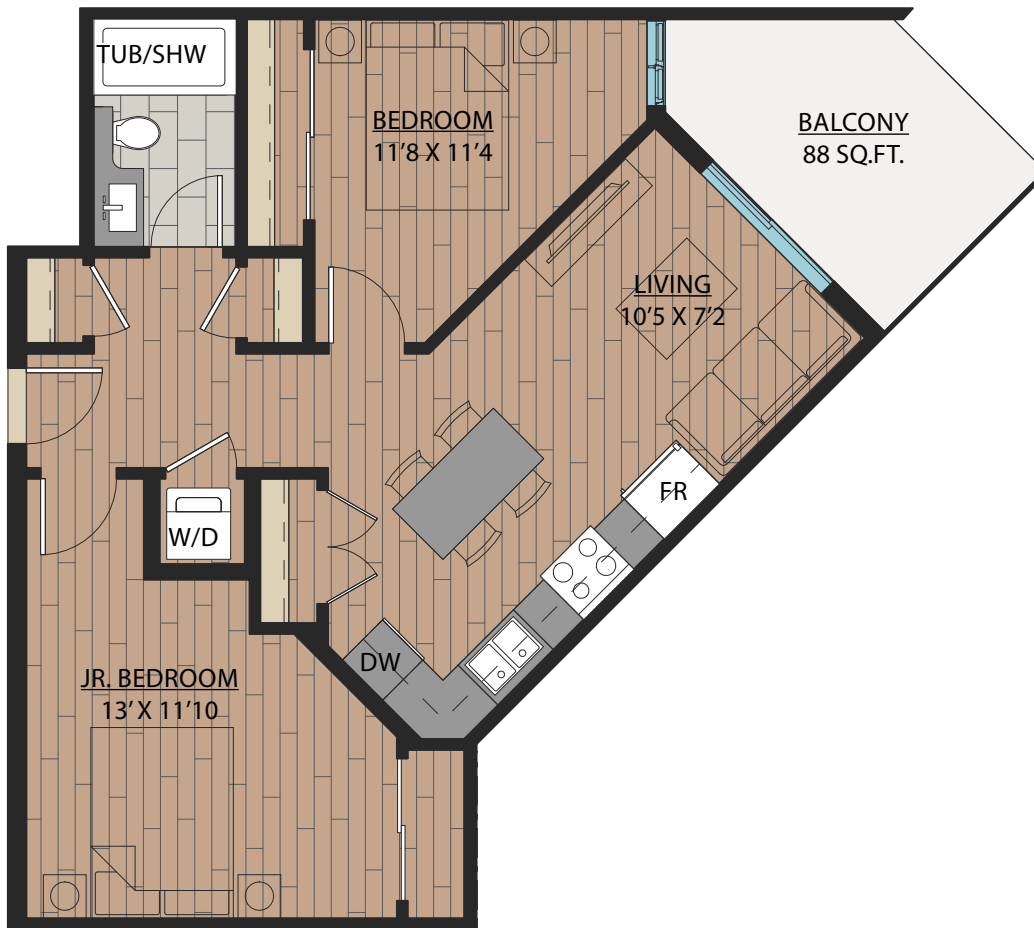




# B9

## JR. 2 BEDROOM | 1 BATH

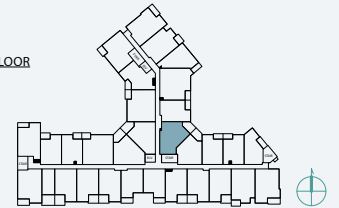
SUITE: 723 SQFT



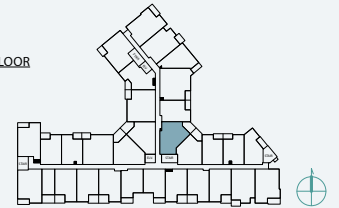
6TH FLOOR



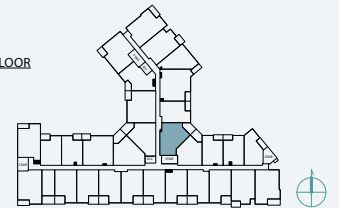
5TH FLOOR



4TH FLOOR



3RD FLOOR



2ND FLOOR



[www.LarnerLanding.ca](http://www.LarnerLanding.ca)

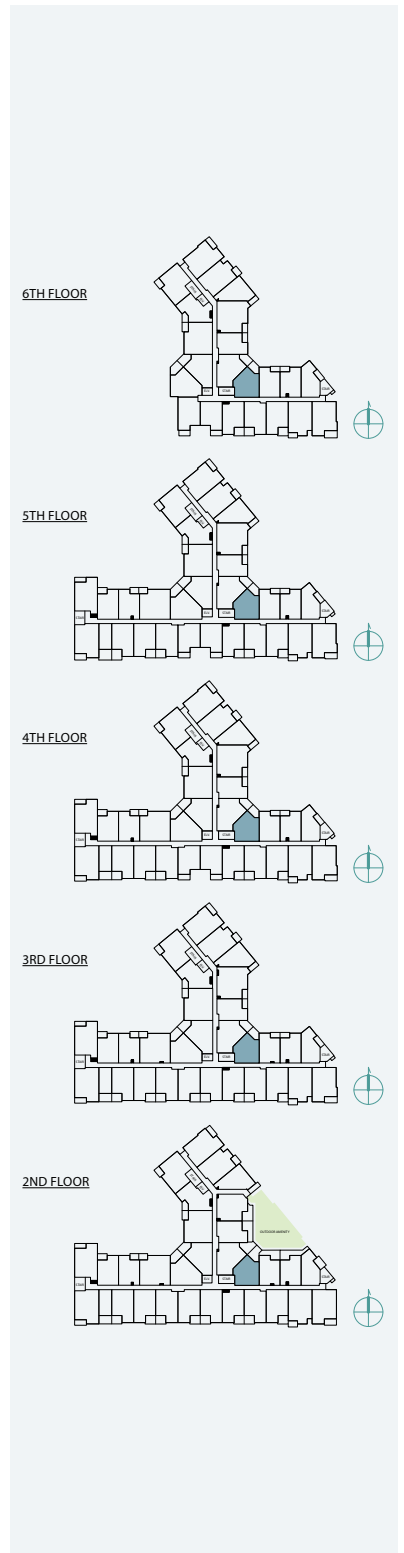
As part of our on-going product development program, the Developer reserves the right to make modifications and/or changes to the specifications. Some suites are mirror images of the plans shown in the brochure. Square footages and room sizes are based on Architectural drawings and actual measurements may vary. Diagrams are close representations, as-built sizes. Furniture is displayed for illustration purposes only. Suites are sold unfurnished. E. & O.E.

2024-12-12

# B10

## JR. 2 BEDROOM | 1 BATH

SUITE: 622 SQFT



[www.LarnerLanding.ca](http://www.LarnerLanding.ca)

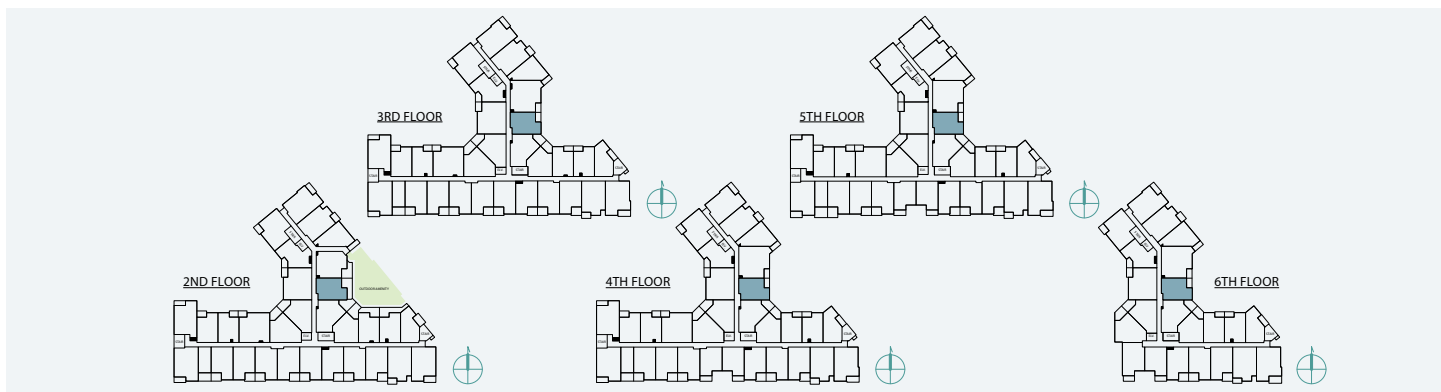
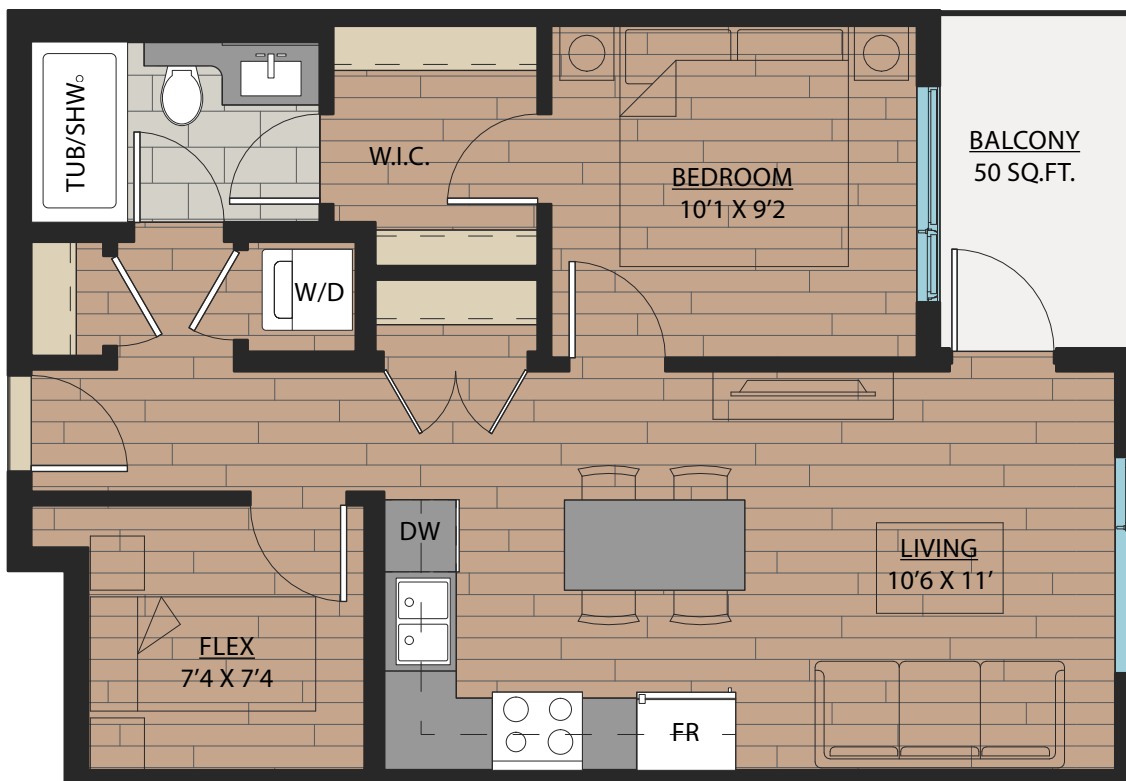
As part of our on-going product development program, the Developer reserves the right to make modifications and/or changes to the specifications. Some suites are mirror images of the plans shown in the brochure. Square footages and room sizes are based on Architectural drawings and actual measurements may vary. Diagrams are close representations, as-built sizes. Furniture is displayed for illustration purposes only. Suites are sold unfurnished. E. & O.E.

2024-12-12

# B11

## 1 BEDROOM + FLEX | 1 BATH

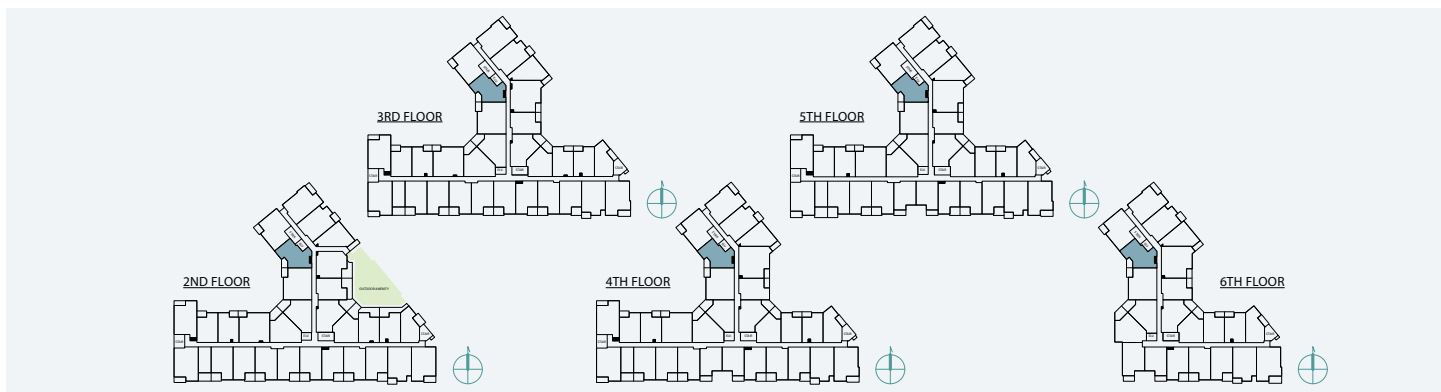
SUITE: 608 SQFT



# B12

## JR. 2 BEDROOM | 1 BATH

SUITE: 671 SQFT

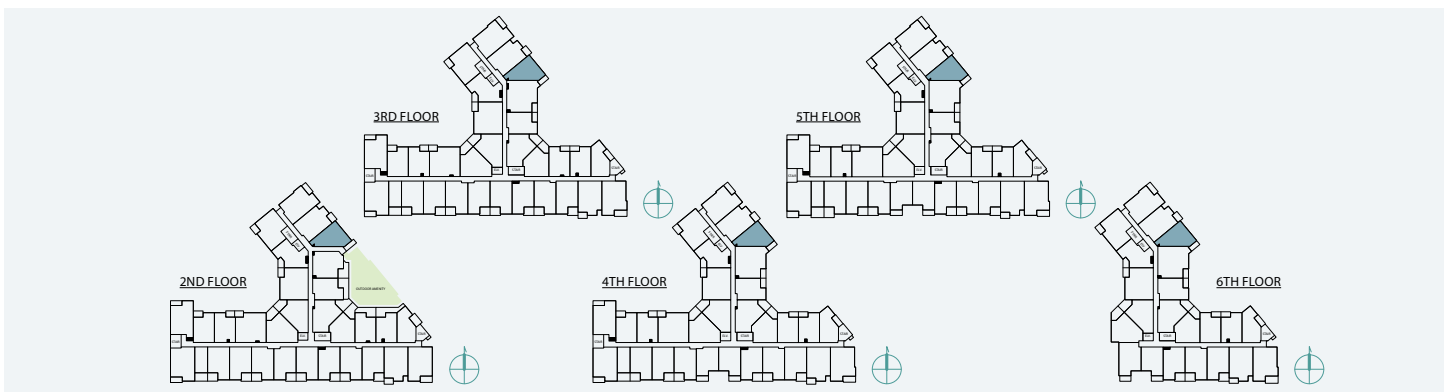


[www.LarnerLanding.ca](http://www.LarnerLanding.ca)

# B13

## 1 BEDROOM + DEN | 1 BATH

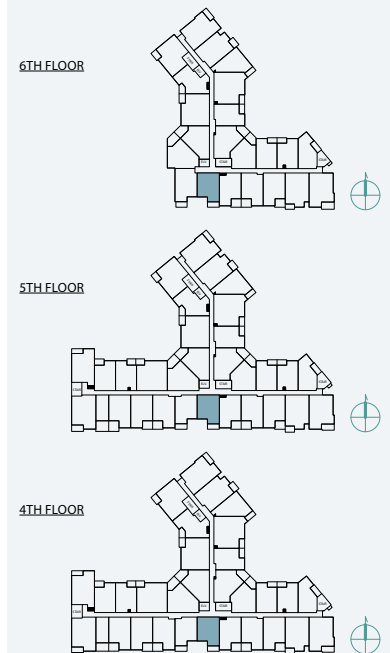
SUITE: 623 SQFT



# B14

## 1 BEDROOM + FLEX | 1 BATH

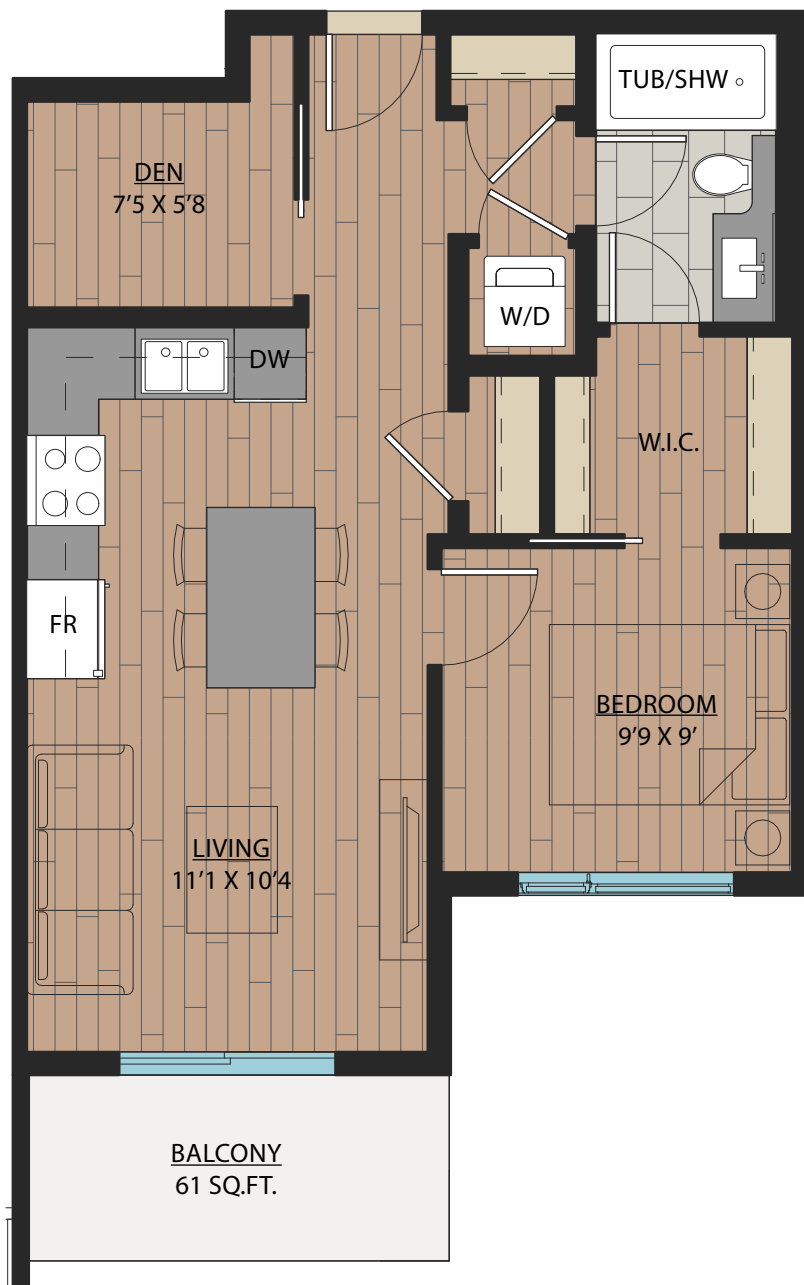
SUITE: 590 SQFT



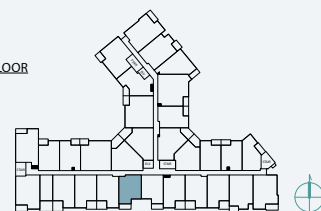
# B15

## 1 BEDROOM + DEN | 1 BATH

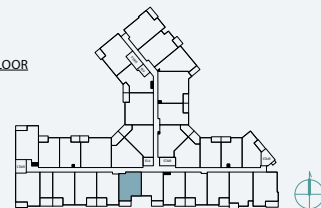
SUITE: 587~589 SQFT



5TH FLOOR



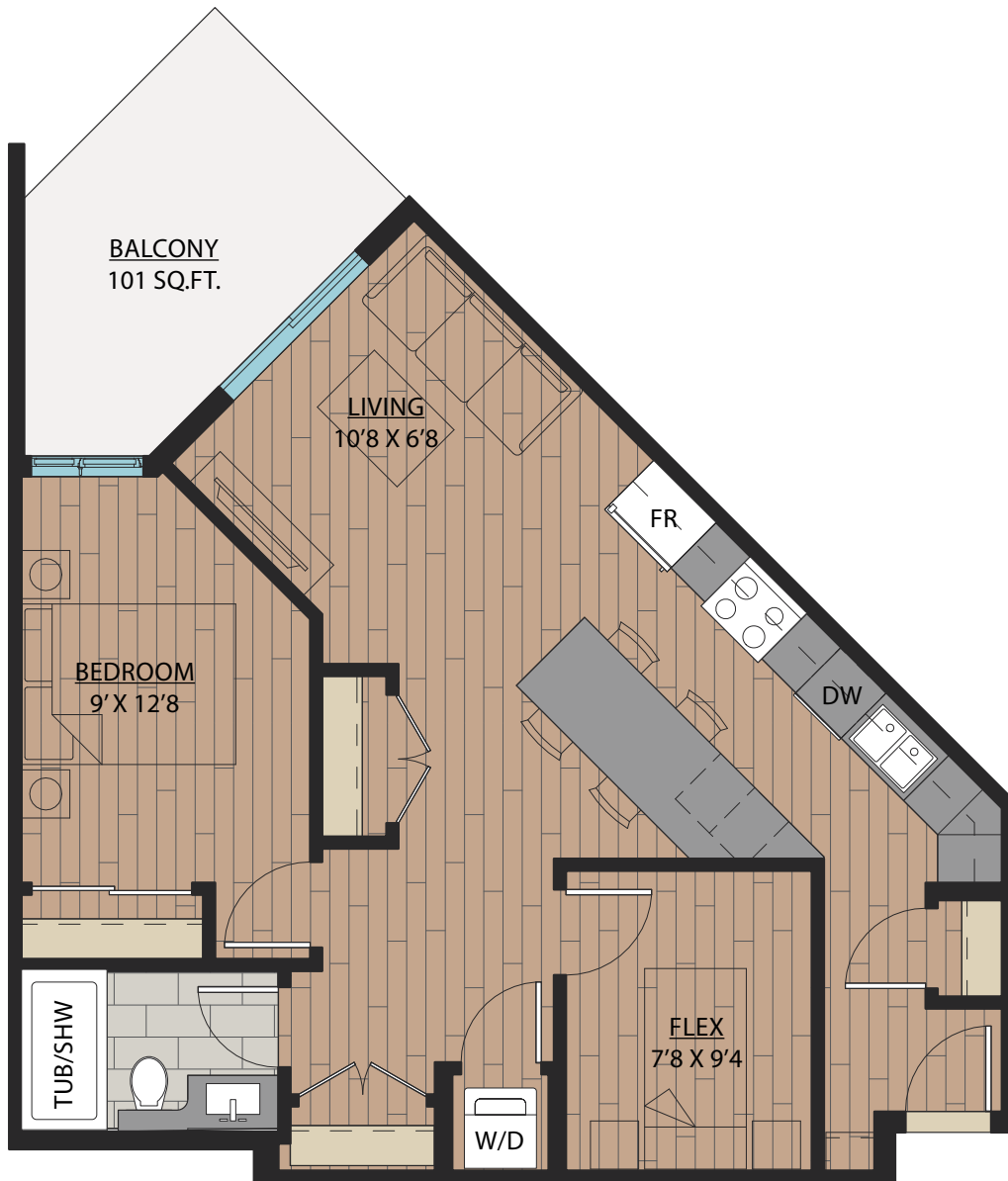
4TH FLOOR



# B16

## 1 BEDROOM + FLEX | 1 BATH

SUITE: 708 SQFT



6TH FLOOR

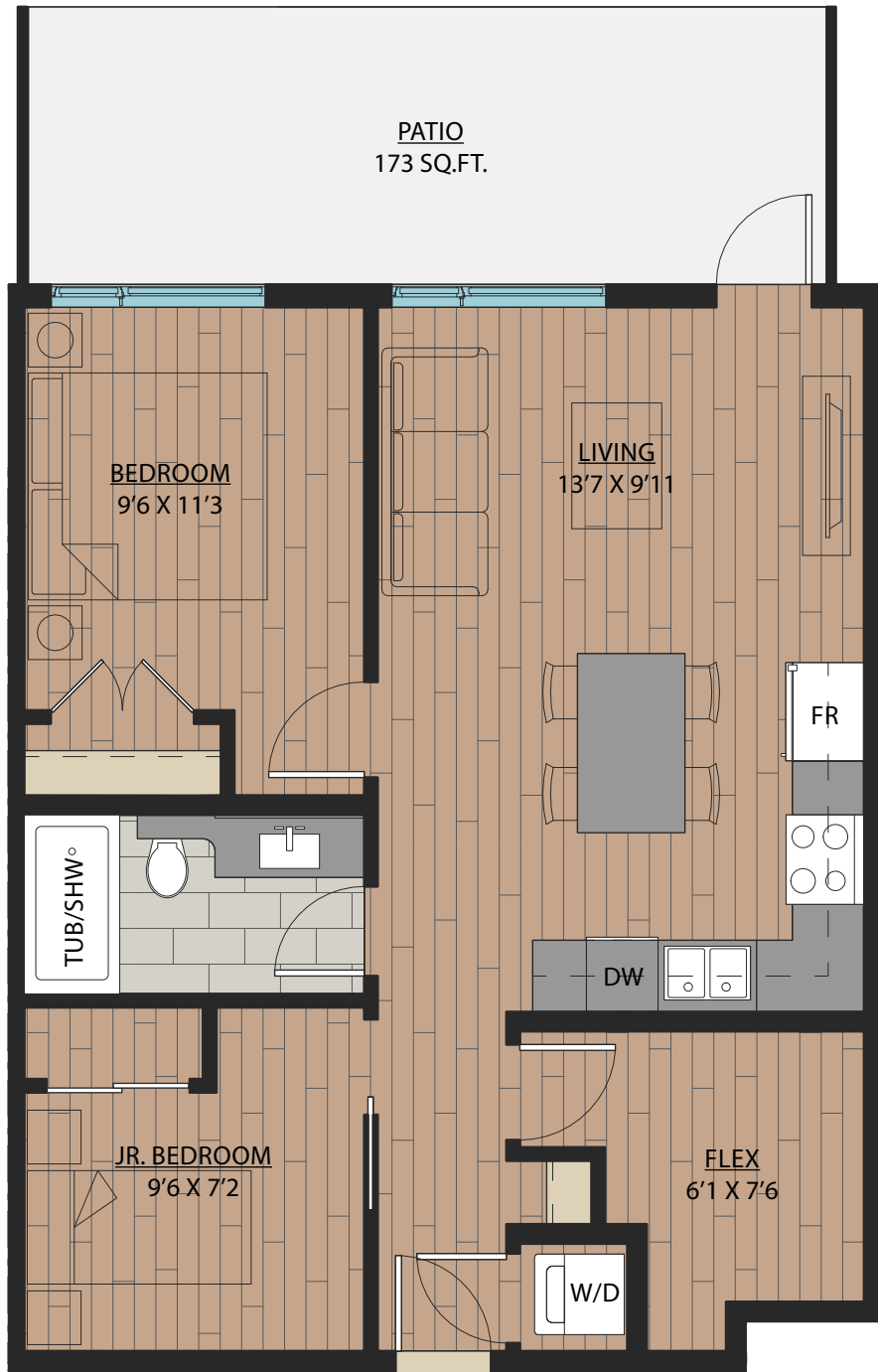




# B17

## JR. 2 BEDROOM + FLEX | 1 BATH

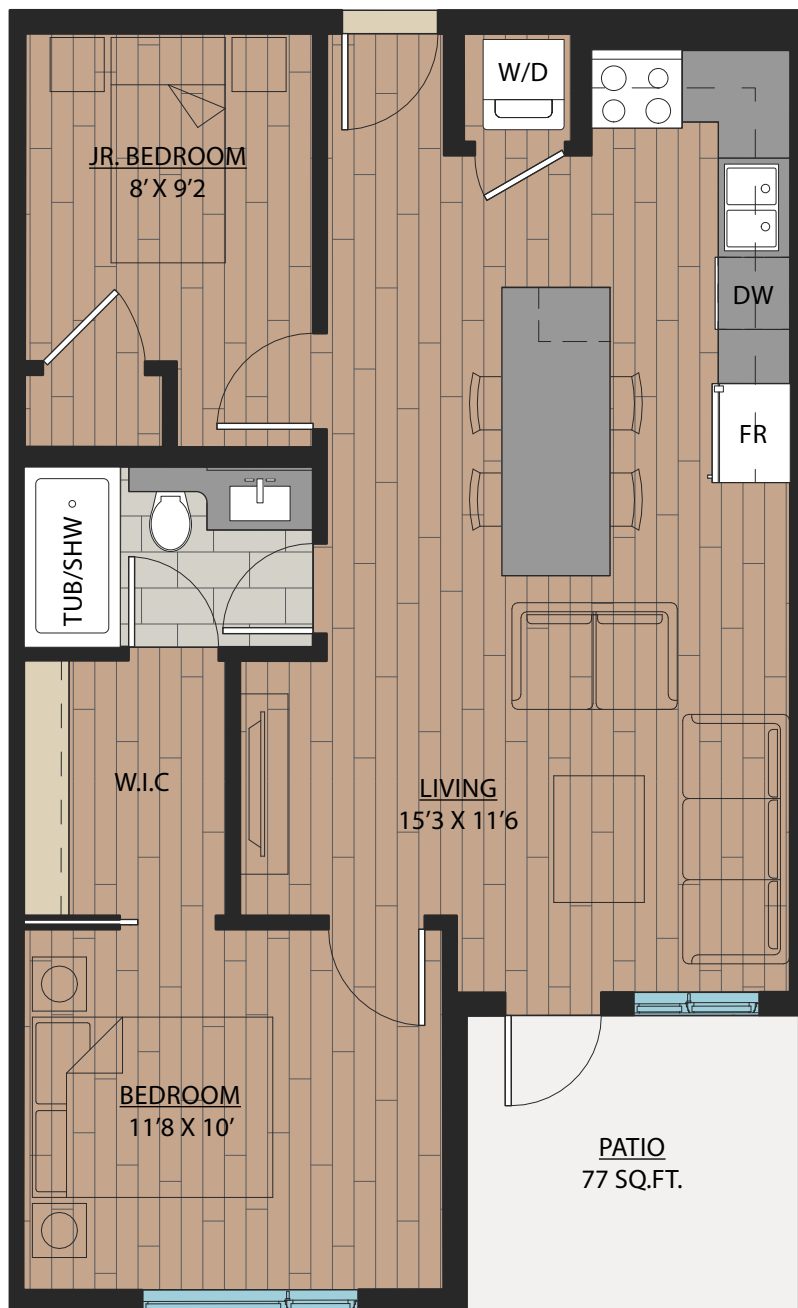
SUITE: 721 SQFT



# B18

## JR. 2 BEDROOM | 1 BATH

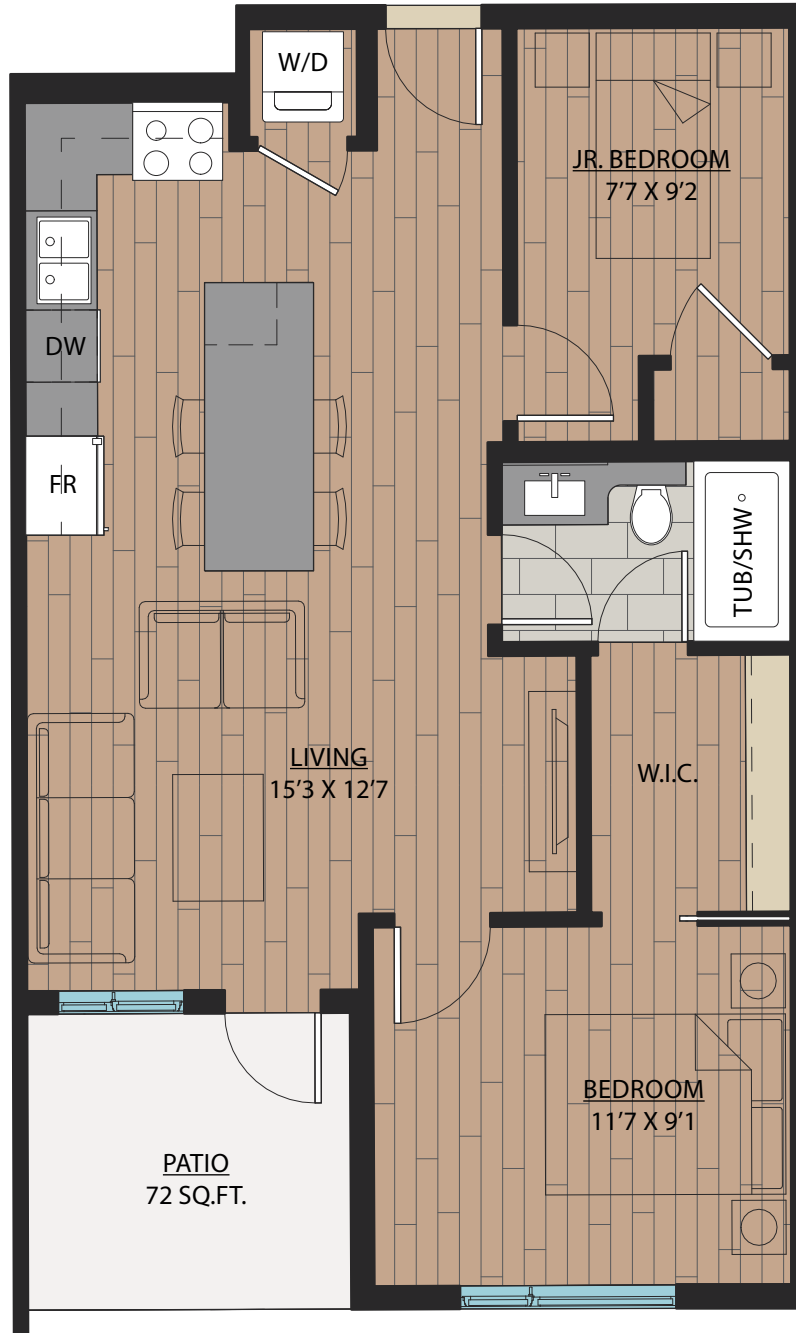
SUITE: 706~710 SQFT



# B18A

## JR. 2 BEDROOM | 1 BATH

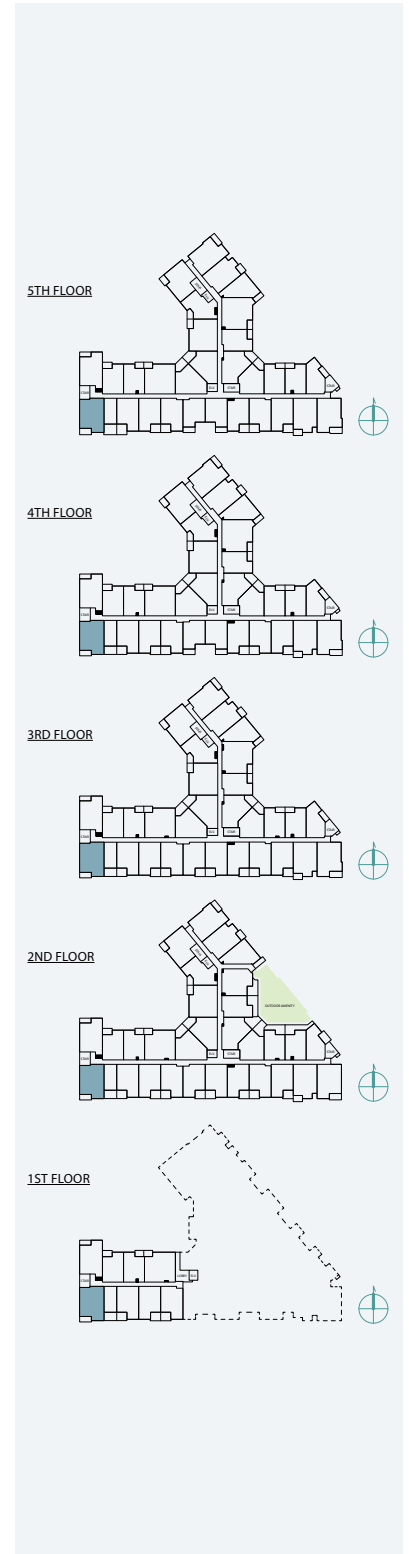
SUITE: 705 SQFT



# C1

## 2 BEDROOM + FLEX | 2 BATH

SUITE: 785 SQFT



# C1A

## 2 BEDROOM + FLEX | 2 BATH

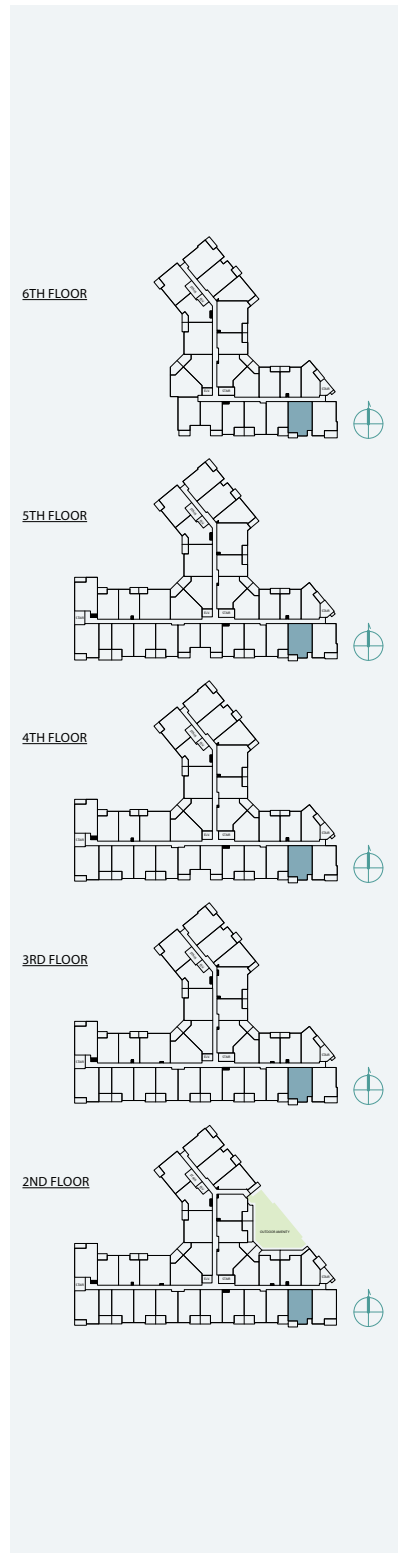
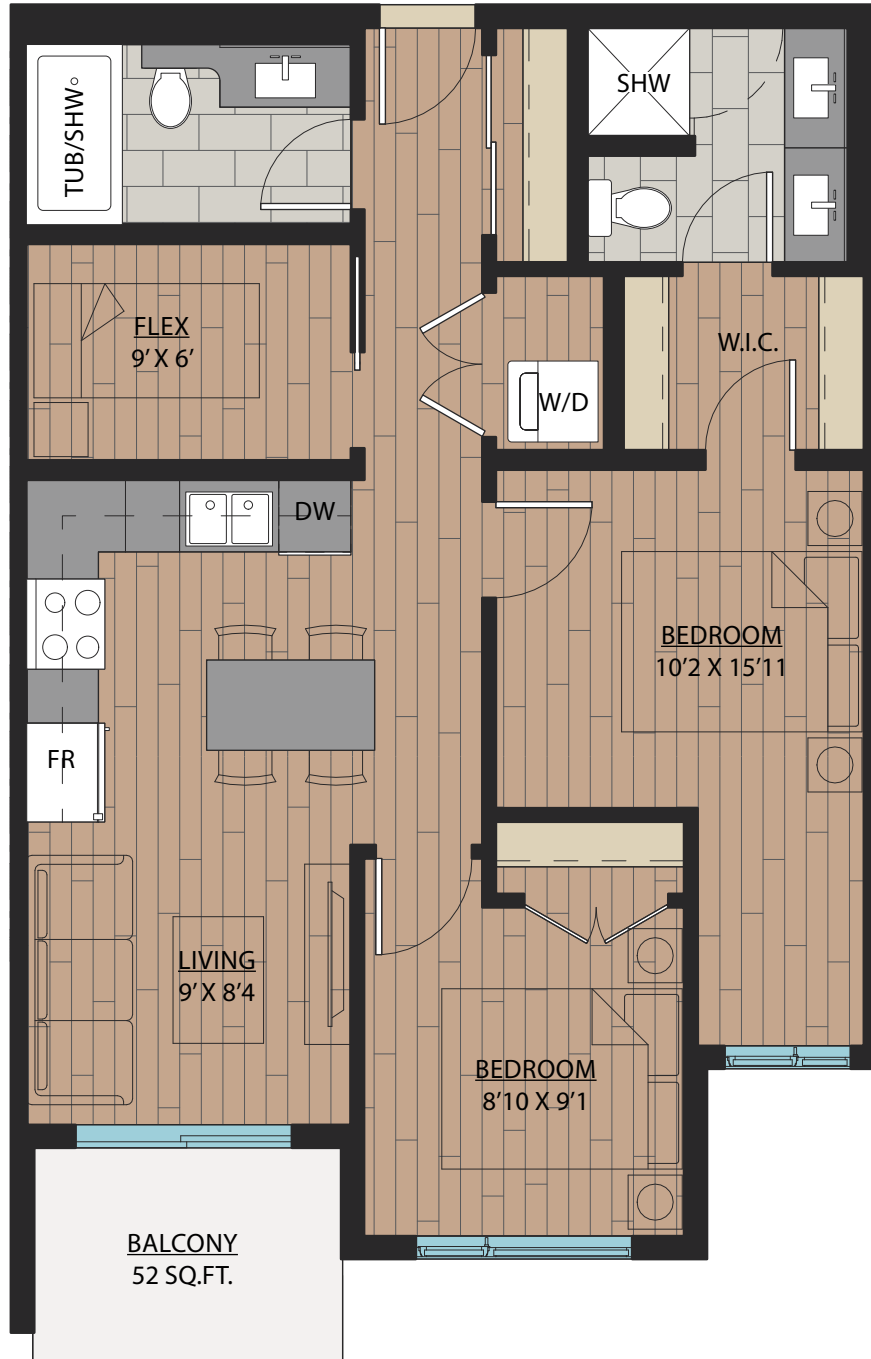
SUITE: 785 SQFT



# C2

## 2 BEDROOM + FLEX | 2 BATH

SUITE: 771 SQFT



[www.LarnerLanding.ca](http://www.LarnerLanding.ca)

As part of our on-going product development program, the Developer reserves the right to make modifications and/or changes to the specifications. Some suites are mirror images of the plans shown in the brochure. Square footages and room sizes are based on Architectural drawings and actual measurements may vary. Diagrams are close representations, as-built sizes. Furniture is displayed for illustration purposes only. Suites are sold unfurnished. E. & O.E.

2024-12-12

# C2A

## 2 BEDROOM + FLEX | 2 BATH

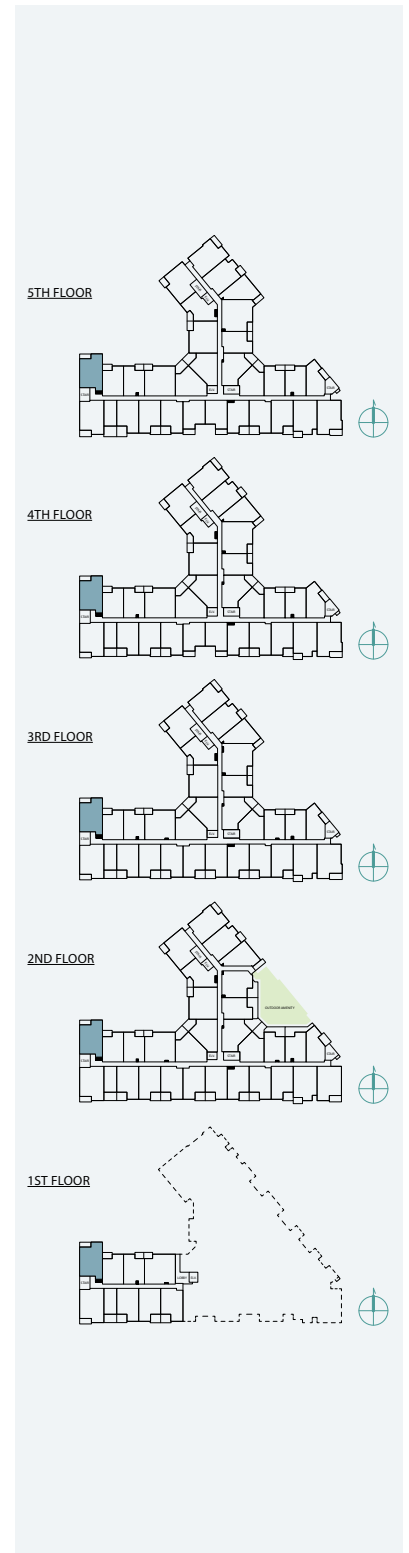
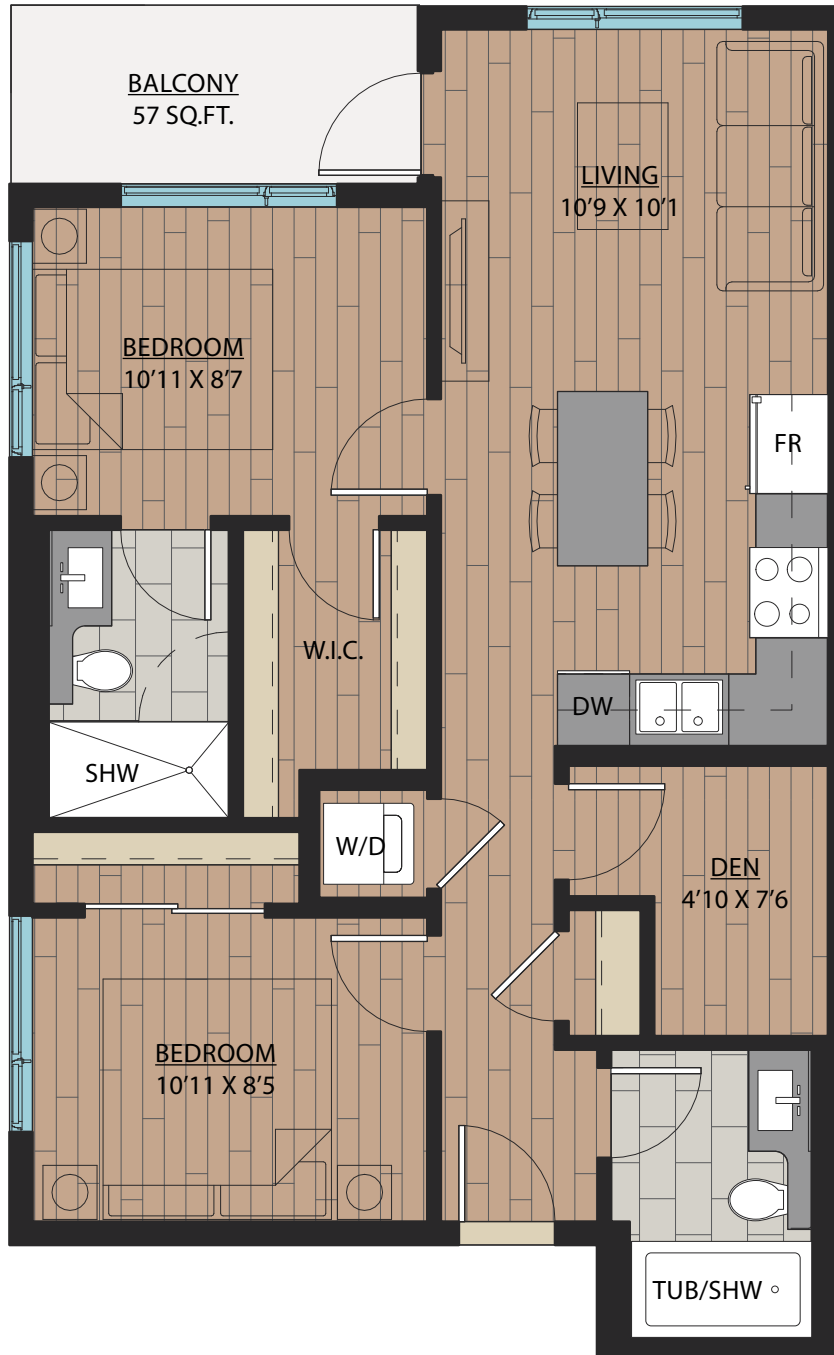
SUITE: 771 SQFT



# C3

## 2 BEDROOM + DEN | 2 BATH

SUITE: 748 SQFT





# C4

## 2 BEDROOM + FLEX | 2 BATH

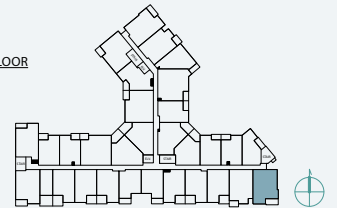
SUITE: 778~789 SQFT



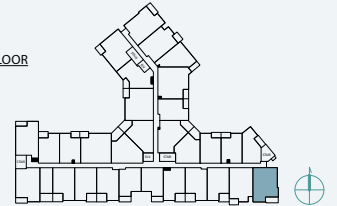
6TH FLOOR



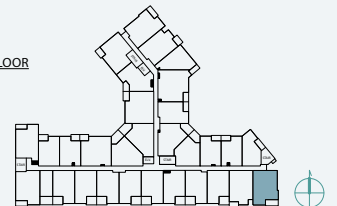
5TH FLOOR



4TH FLOOR



3RD FLOOR



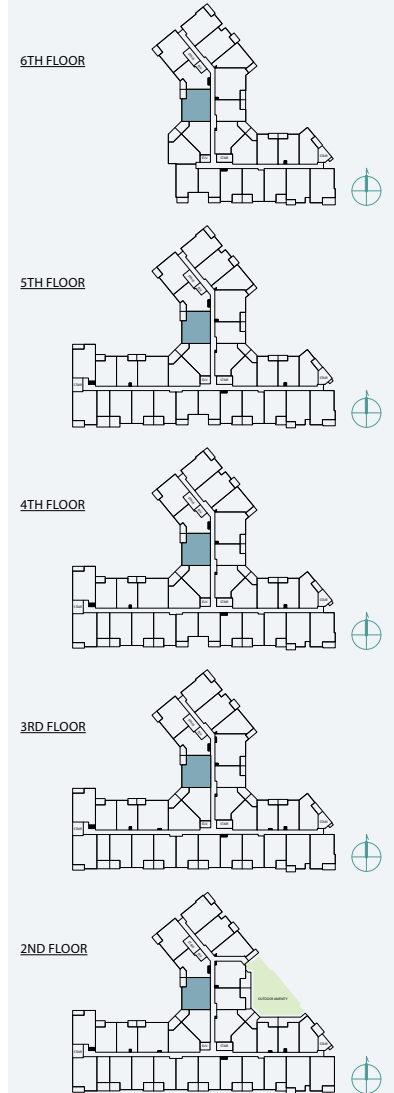
2ND FLOOR



# C5

## JR. 3 BEDROOM | 2 BATH

SUITE: 887 SQFT



[www.LarnerLanding.ca](http://www.LarnerLanding.ca)

As part of our on-going product development program, the Developer reserves the right to make modifications and/or changes to the specifications. Some suites are mirror images of the plans shown in the brochure. Square footages and room sizes are based on Architectural drawings and actual measurements may vary. Diagrams are close representations, as-built sizes. Furniture is displayed for illustration purposes only. Suites are sold unfurnished. E. & O.E.

2024-12-12

# C6

## JR. 3 BEDROOM | 2 BATH

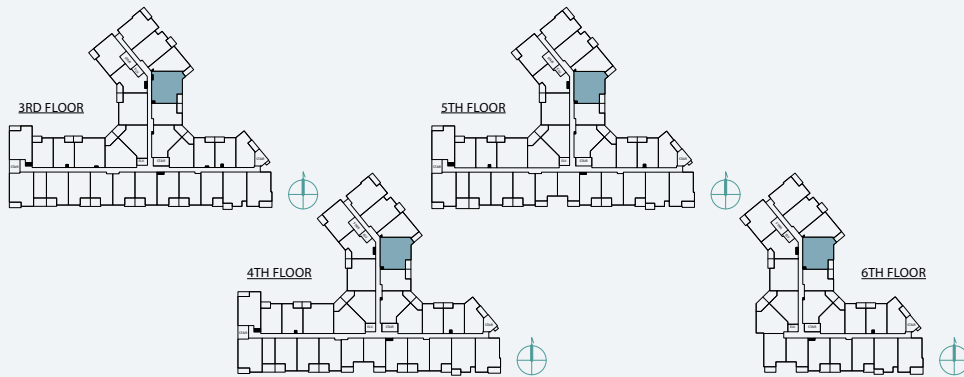
SUITE: 884~893 SQFT



# C7

## JR. 3 BEDROOM | 2 BATH

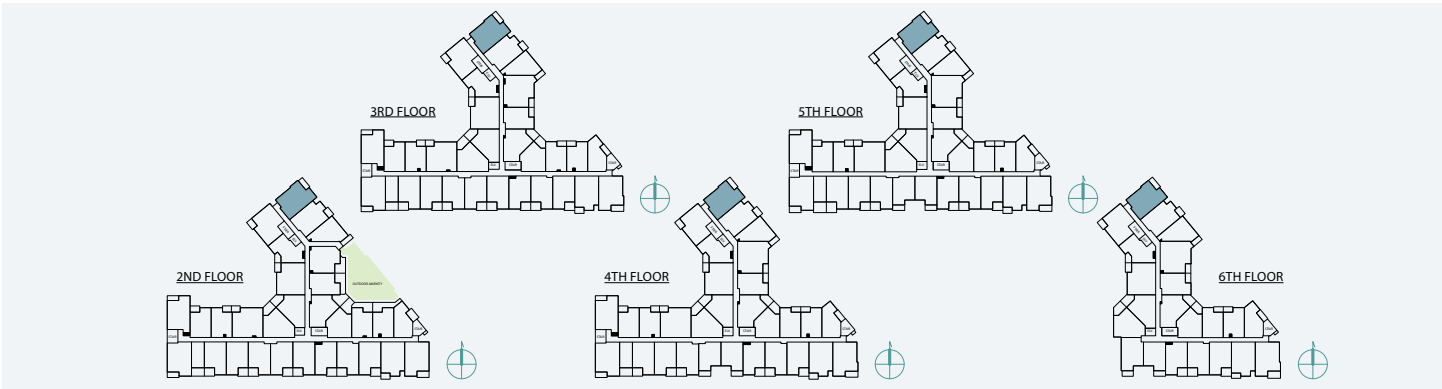
SUITE: 938~941 SQFT



# C8

## JR. 3 BEDROOM | 2 BATH

SUITE: 809 SQFT



[www.LarnerLanding.ca](http://www.LarnerLanding.ca)

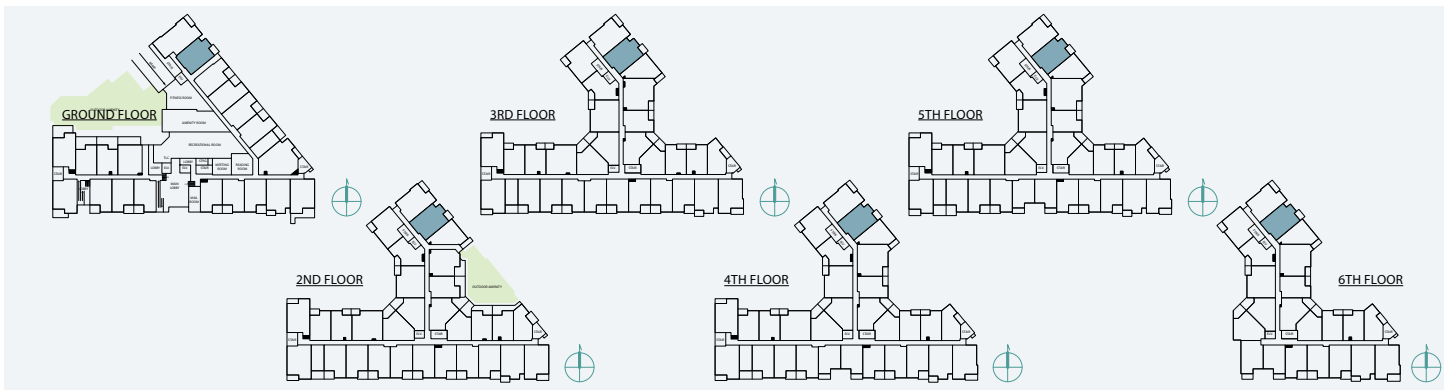
As part of our on-going product development program, the Developer reserves the right to make modifications and/or changes to the specifications. Some suites are mirror images of the plans shown in the brochure. Square footages and room sizes are based on Architectural drawings and actual measurements may vary. Diagrams are close representations, as-built sizes. Furniture is displayed for illustration purposes only. Suites are sold unfurnished. E. & O.E.

2024-12-12



# 2 BEDROOM + FLEX | 2 BATH

SUITE: 769 SQFT



[www.LarnerLanding.ca](http://www.LarnerLanding.ca)

# C10

## 2 BEDROOM + FLEX | 2 BATH

SUITE: 778 SQFT



# C11

## 2 BEDROOM + DEN | 2 BATH

SUITE: 749 SQFT



GROUND FLOOR

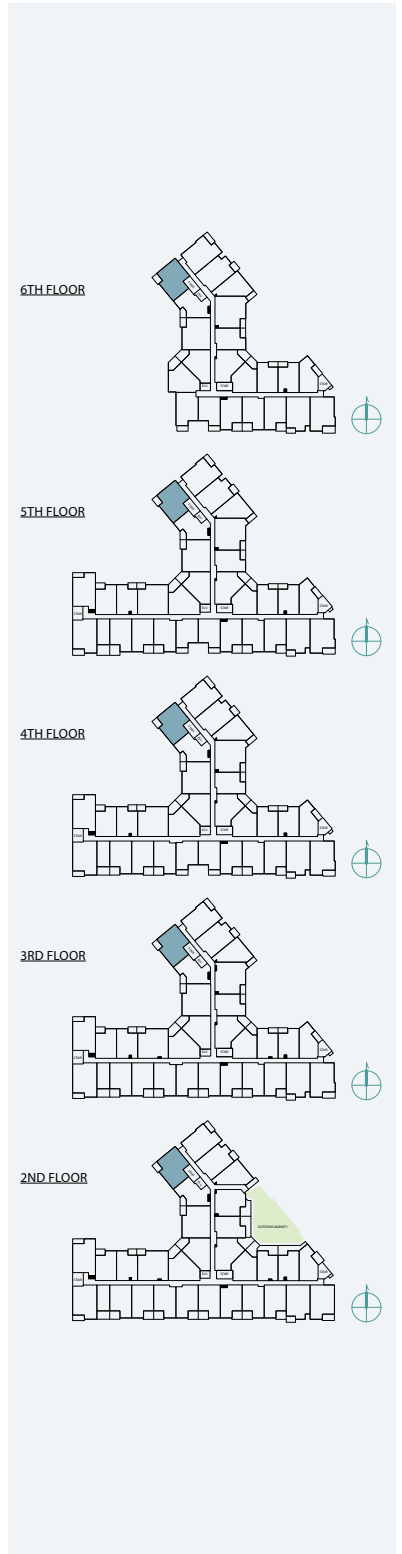




# D1

## 2 BEDROOM | 2 BATH

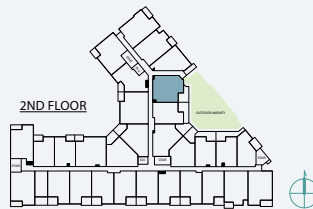
SUITE: 813 SQFT



# D2

## 2 BEDROOM | 2 BATH

SUITE: 750 SQFT



# D3

## JR. 2 BEDROOM | 1 BATH

SUITE: 686 SQFT



6TH FLOOR



# E1

## JR. 4 BEDROOM | 2 BATH

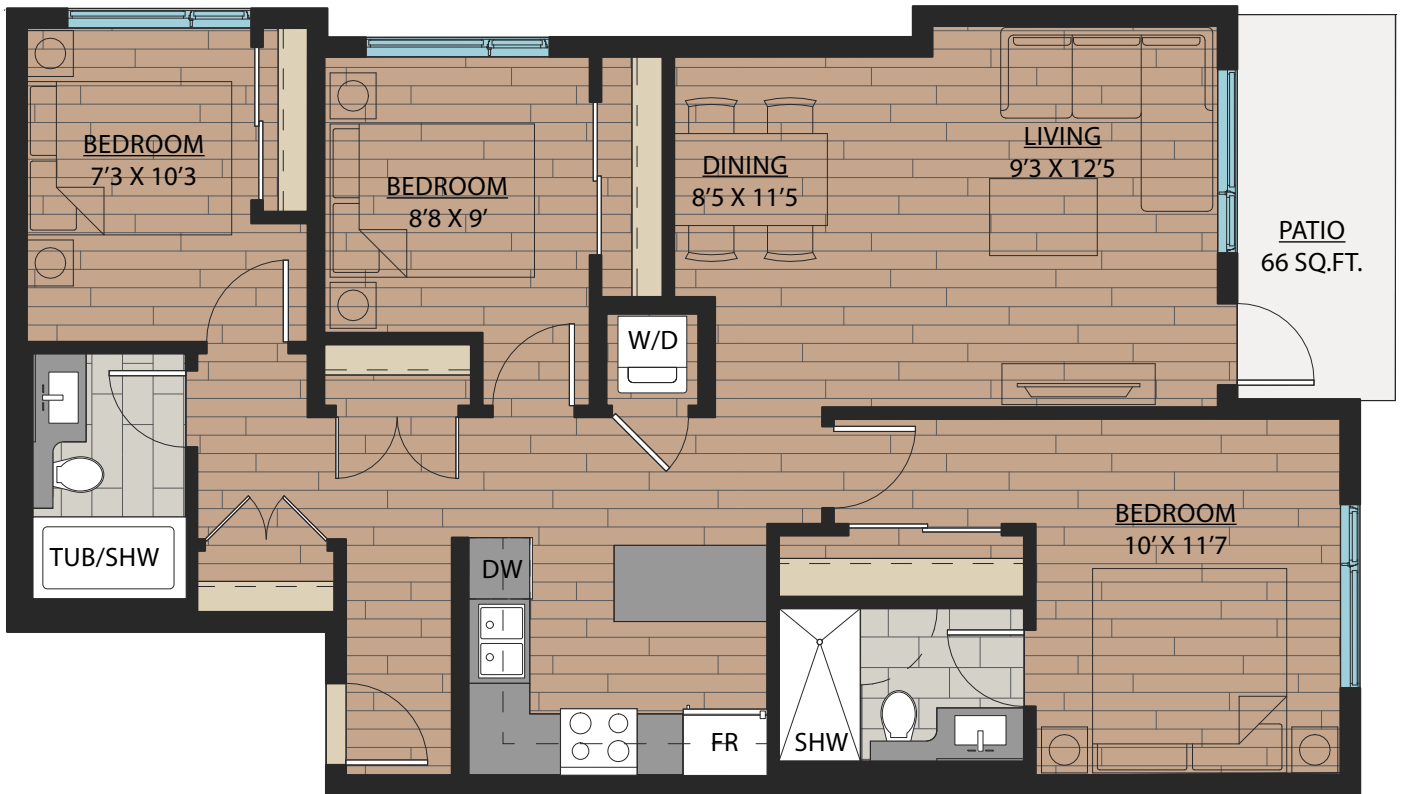
SUITE: 1058 SQFT



# E2

## 3 BEDROOM | 2 BATH

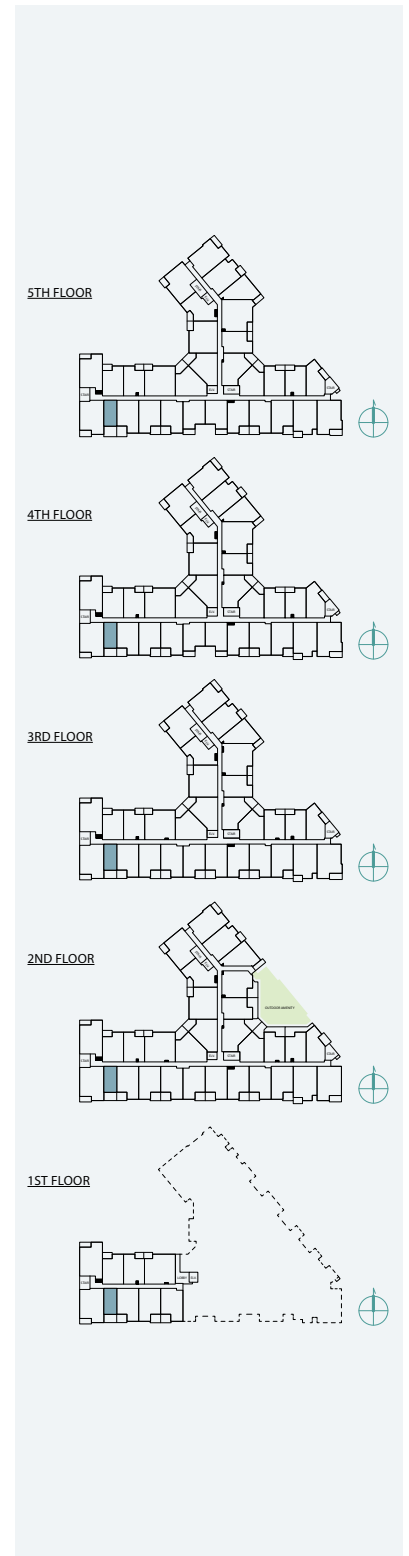
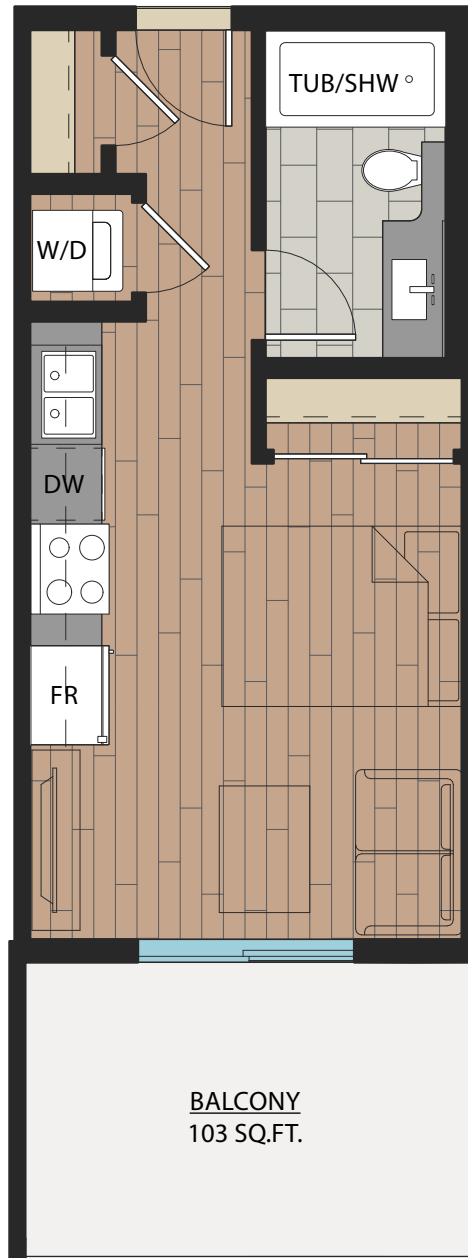
SUITE: 982 SQFT



# F1

# STUDIO | 1 BATH

SUITE: 333 SQFT



# F2

## STUDIO | 1 BATH

SUITE: 372 SQFT

